







THE SOLUTION OF FULLY AUTOMATIC PLASTIC THERMOFORMING

www.rayshape.net



Company Name	 WENZHOU RAYSHAPE MACHINERY CO., LTD
Export Agency	 WENZHOU RAYSHAPE IMPORT AND EXPORT TRADING CO., LTD
Contact	 Kim
WhatsApp/WeChat/Tel	 +86 15355870907
E-mail	 zhu@cnrayshape.com
Date	

Shaping the Future with Cutting-edge Innovation





Company Brief Introduction


Wenzhou Rayshape Machinery Co., Ltd. is a subsidiary of Elemotion Group, located in the beautiful coastal city of Pingyang County, Wenzhou, Zhejiang Province, at No. 19, East Section of Pinghai Avenue, Binhai New Area. It is a manufacturing enterprise that integrates mechanical and software R&D, production, marketing, and after-sales service.

In 2021, Elemotion invested in Wuhu Youhe Automation Technology Co., Ltd., which was officially renamed Wenzhou Rayshape Machinery Co., Ltd. in 2025 and is now wholly owned by Wenzhou Elemotion Holdings.

Wenzhou Rayshape Machinery Co., Ltd. boasts a seasoned R&D team, strong operational and after-sales service capabilities, as well as a solid financial foundation. The company is dedicated to the development and production of high-end, energy-efficient, and highly automated equipment, including positive and negative pressure plastic thermoforming machines, plastic sheet extrusion lines, and plastic roll forming machines.

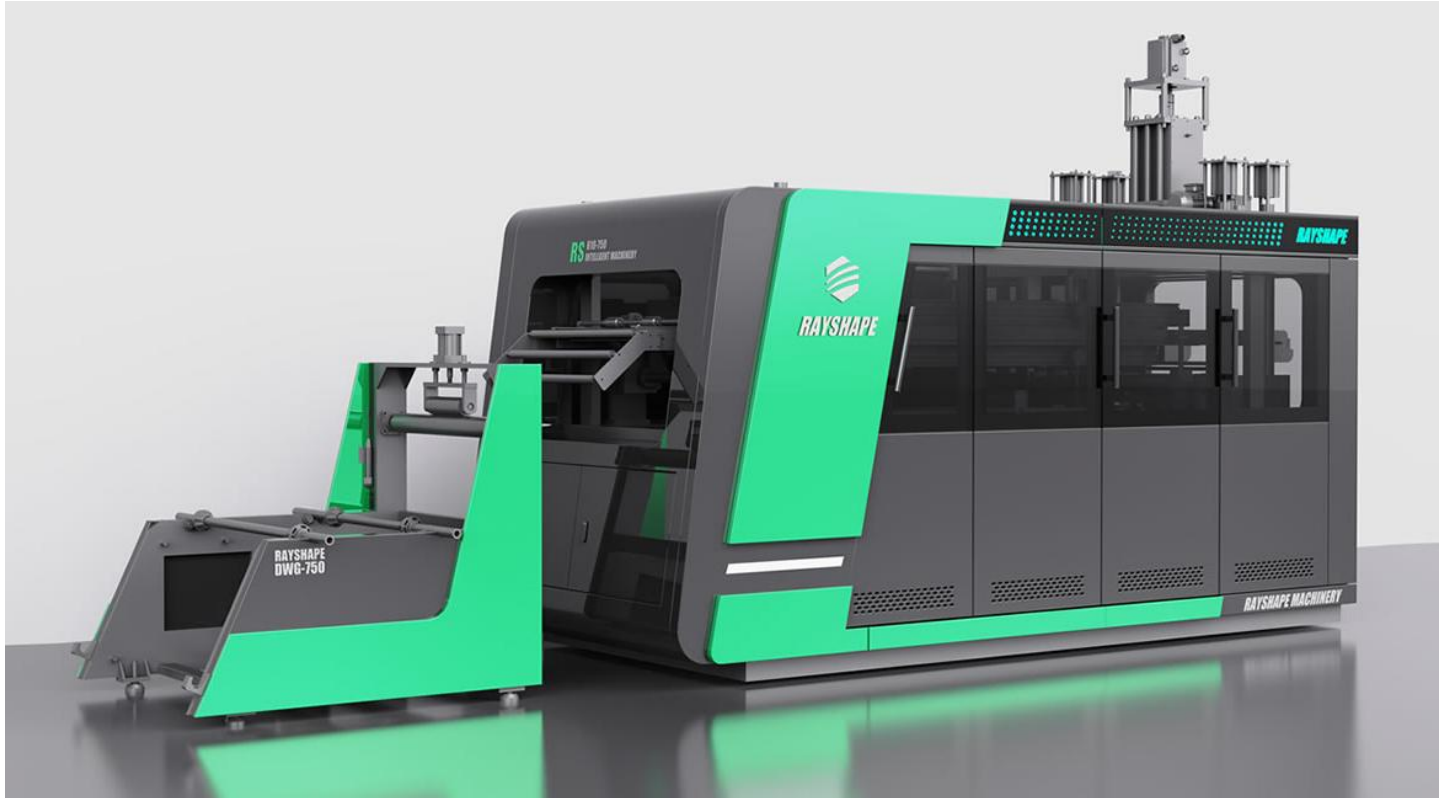
These machines are compatible with a wide range of materials such as A-PET, R-PET, C-PET, BOPS, HIPS, PP, PLA, and PVC, enabling the production of various plastic finished products. Wenzhou Rayshape Machinery Co., Ltd. carries forward Elemotion's spirit of diligence and continuous improvement, constantly striving for self-surpassing excellence. Embracing innovation, the company has successively developed high-quality automated equipment and is committed to learning from Elemotion's path toward becoming a leading enterprise in the industry.

Quotation

No.	photo	DESCRIPTION OF GOODS	Qty.	Unit Price (USD)	Amount (USD)
1		All Servo Thermoforming Machine Model RSC-800-500	1		
Total					
ATTN Pls: 1. FOB NINGBO/SHANGHAI PORT, CHINA; 2. Voltage: 380V/50HZ/3P; 3. The quotation is valid within one month.					
Payment term: 4. By T/T. 30% as deposit 5. 70% balance should be paid before shipment					
Delivery time: 6. Within 45 working days since the deposit received and the drawing confirmed.					
Packing: 7. Standard packaging					
Warranty period: 8. 12 months since date of the buyer receive the machine. Within this guarantee, if parts damaged or destroyed not caused by human factors, seller will provide it free of charge, freight will be on buyer's account.					
Installation, Adjusting & Commissioning: 9. The supplier must arrange for installation technicians to install and commission the machine in the buyer's country. But the buyer should pay for the charges covering round-trip tickets of engineer, VISA, accommodations, meal, translator and any other charges happened in Buyer's country. Technicians are free of charge within 7 days, and the buyer should pay 150USD per day more than 7 days.					

All Servo Thermoforming Machine

Model: RSC-800-500



INTRODUCTION

RS-800-500 is a new generation full servo plastic thermoforming machine. It uses internationally advanced plastic sheet forming technology. It is a plastic sheet forming equipment that integrates mechanical, pneumatic and electrical integrated design. It can automatically complete all actions such as loading, feeding, heating, forming and cutting. Compared with hydraulic drive, this machine has more stable forming, faster speed and cleaner production.

It is suitable for processing different materials, such as A-PET, R-PET, C-PET, BOPS, HIPS, PP, PLA, PVC and barrier materials, and is suitable for the production of various beverage cups, coffee cups, milk cups, water cups, bowls, boxes and other plastic products.

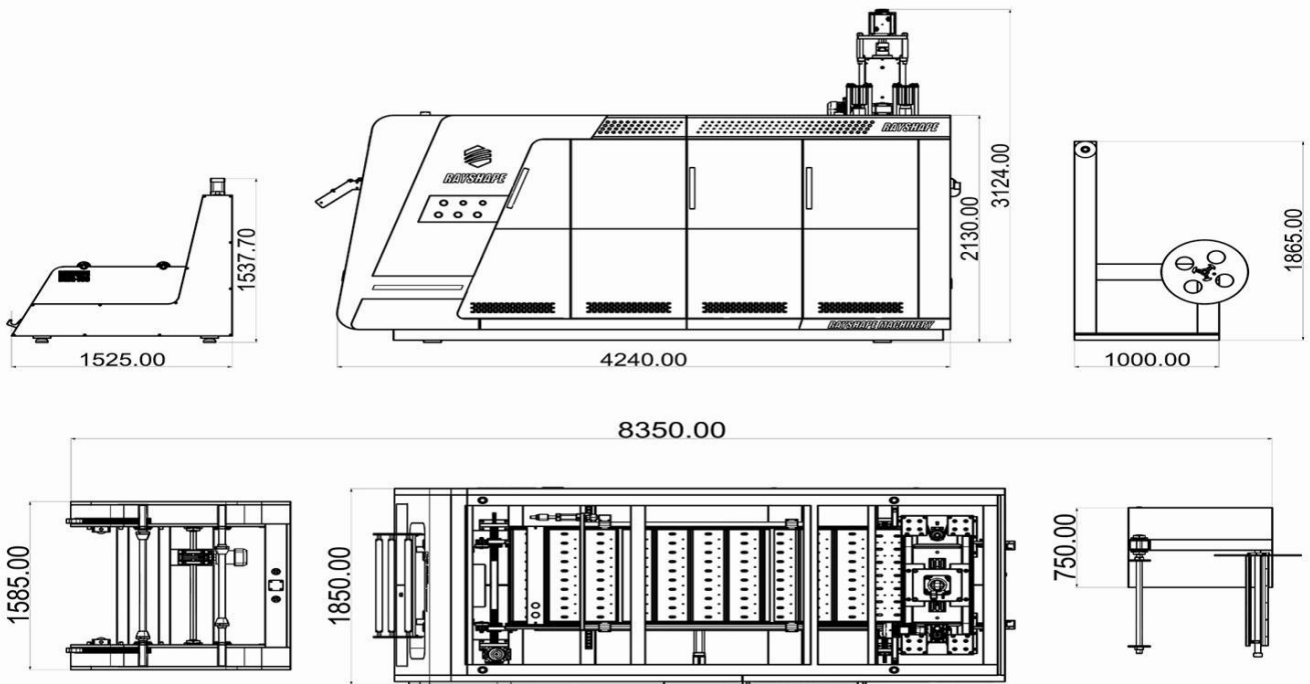
FEATURES AND ADVANTAGES

1. High degree of standardization, complete functions, safe, efficient, energy-saving and hygienic.
2. It integrates mechanical, pneumatic and electrical integration, and is controlled by microcomputer and programmable controller (PLC).
3. Easy-to-operate human-machine interface, and has the function of remote connection.
4. Electric lifting, double-station large-diameter unwinding, allowing a single person to load coils

weighing up to 600KG.

5. Servo feeding, stepless adjustment of sheet length, high speed, accuracy and stability.
6. The upper and lower electric heating furnaces are used for 6-7 heating stages and protection to reduce the impact of air convection on temperature, ensuring stable product molding. It only takes 3 minutes to heat from 0 to 400 degrees, improving production efficiency. The electric heating furnace can be automatically removed.
7. The quick mold change system can conveniently, quickly, accurately and safely change molds, reduce machine downtime, reduce labor waste, and improve production efficiency.
8. The mold opening and closing by servo motor, with high precision, low wear, fast speed and low noise. Each station is supported by four columns, combined with a five-point structural connecting rod, which has good stability.
9. Positive pressure forming ensures uniform thickness, full shapes, and sharp corners.
10. The chain frame features a fast cooling and wear-resistant design.
11. The cup blowing system offers adjustable blowing angle and air volume.
12. A servo motor chain drive automatically extends the track to prevent sheet sagging, ensuring stable, precise, and smooth sheet feeding.
13. Combined with the edge material winding device, the entire production process is clean, without burrs and waste.
14. The design of the electrical cabinet is simple and refreshing, simplifying the machine assembly and wiring installation process.

MACHINE STRUCTURE



SPECIFICATION

Sheet Materials	PP/PS/PET/PLA/PE/CPET	Air Consumption	4m ³ /min 0.5-0.8bar
Sheet Thickness	0.2-2.5mm	Weight	7500kg
Forming Area	780*480mm	Total Installed Power	150KW
Width Of Sheet	400-850mm	Heating Power	122kw
Max Speed	35moulds/min	Feeding Motor	4.4kw
The Longest Knife	12m	Control Forming Plug Motor Power	7.5kw
Dimension	4500*2000*2600mm	Winding Waste Of Edge Sheet Motor Power	0.4kw
Forming clamping force	1100kn	Forming Motor	15kw
Max. Forming Depth	≤180mm by blowing	Machine Travel	≤220mm
Running Power	60KW		

CONFIGURATION LIST

Motor Reducer	Guangdong	Temperature Module	Taiwan Delta
Molding Solenoid valve	Japan SMC	Heating Brick	Jiangsu Tianbao
Solenoid Valve	Japan SMC	Contactora	America Eaton
Cylinder	Taiwan AirTac	Low Voltage Apparatus	America Eaton
Servo Motor	China Inovance	Other Electrical Appliances	Germany Phoenix




Albert Einstein College of Medicine




Vacuum Pumps and Systems










昆仑通态 kunluntongtai


Powering Business Worldw









Choose RAYSHAPE,
Share a Prosperous Future!



GLOBAL BUSINESS PARTNERS

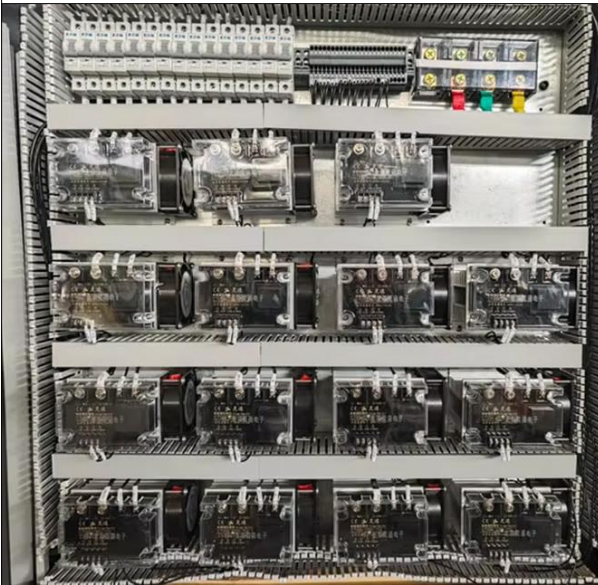
ESSENTIAL COMPONENT



Pillar Servo Construction:

Our pillar offers superior product quality across various shapes, including round, rectangular, oval, and square, even for larger sizes.

This mechanism significantly increases the rate of finished products and ensures more stable operation, making it an excellent choice for high-efficiency production.



PLC:

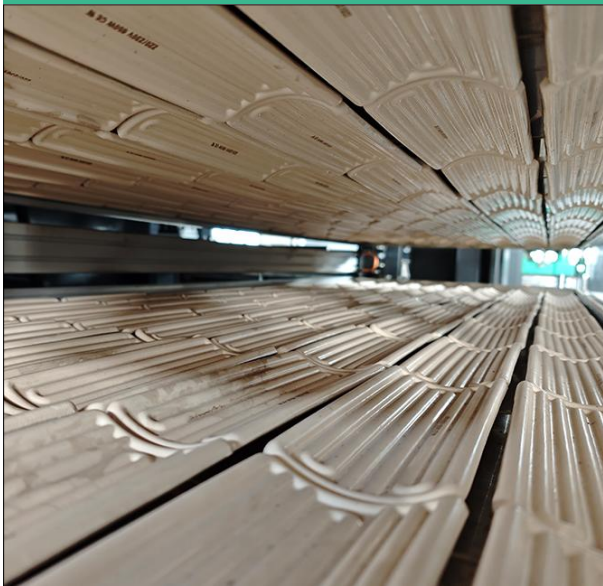
Our cup forming machine, features a Inovance PLC according to standard design, ensuring the stability, high efficiency, and low failure rate of the entire machine. This advanced system guarantees consistent and reliable operation, making it an ideal choice for high-precision production needs.



Human Machine Interface:

Our cup forming machine, is equipped with a Inovance HMI, known for its advanced industrial grade and high durability.

This state-of-the-art HMI enhances user interaction, ensuring efficient and reliable operation for all production needs.



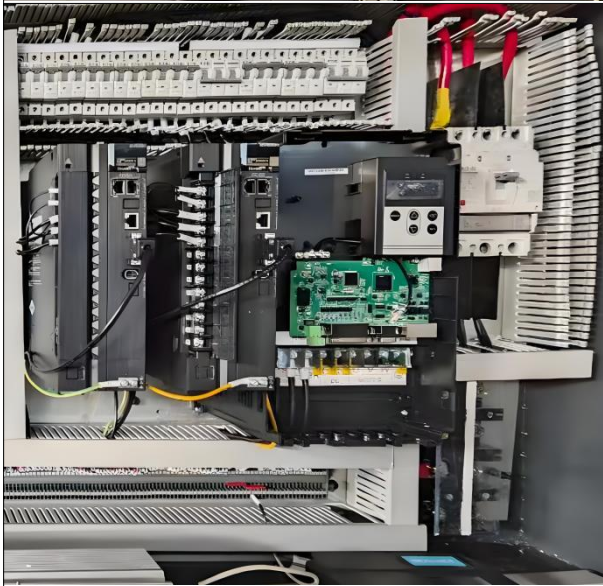
Oven:

Our system boasts seven times the maximum forming area, utilizing advanced little infrared ceramic tile heating for more uniform results. Constructed with 304 stainless steel for durability, it features Dongtai Tianbao heaters controlled by an intelligent temperature controller for precise temperature management. The oven structure adopts a pneumatic drawer design for easy access, while safety measures include manual blowing cooling to prevent sheet fall, ensuring safe and efficient operation.



Servo:

Our machine is equipped Inovance Servo Motors, ensuring high accuracy and production efficiency. These reliable servo motors have been in use for the past 10 years without any errors, demonstrating their exceptional durability and performance in industrial applications.



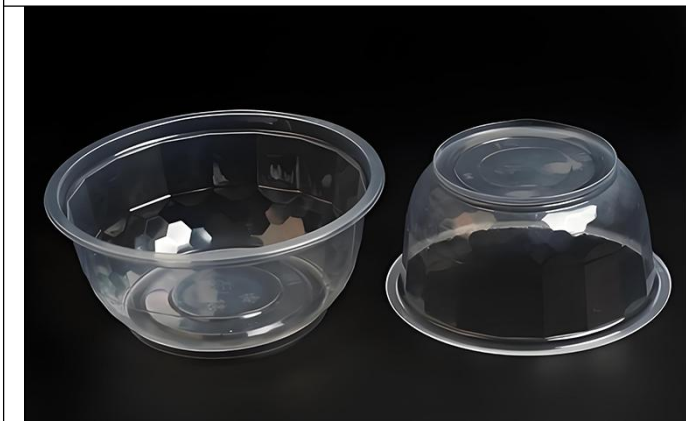
Servo Drive:

Our cup forming machine, is equipped with Inovance Servo Drives, renowned for their high accuracy and production efficiency. Having utilized these servo drives for all our thermoforming machines, we have experienced flawless performance with no errors, showcasing their exceptional reliability and consistency in delivering high- quality results.




MCB:

Our cup forming machine, features CHINT MCBs (Miniature Circuit Breakers) for reliable electrical protection and safety. CHINT MCBs are known for their durability and high performance, ensuring stable operation and protecting the machine's electrical systems from faults and overloads.

PRODUCTS RANGE



AUXILIARY EQUIPMENT:

PHOTO	SPECIFICAITON
	Name: Air Compressor
	Motor Power: 22kw
	Capacity: 3.8m ³ / 0.8/mpa
	Dimension: 1200mm*880mm*1550mm
	Weight: 600kg
	Air tank: 1000L
<p>With a unique coating design, it features high strength, sturdiness and durability, a long service life, low energy consumption, and low noise. High-efficiency oil/gas separation design with high efficiency. There is also a good shock absorption design, enabling smooth and silent operation. It adopts cyclone air intake, with a filtration precision of 99.9%, and still ensures reliability even in harsh environments</p>	
	Name: Chiller 10P
	Cooling capacity: 29.8kw/50hz 25628 Kcal/h/50Hz
	Compressor power: 7.5kw
	Cooling water flow: 10m ³ /h
	Pipe Diameter: DN50
	Water pump power: 1.5kw
	Weight: 400kg
	Dimension: 1400mm*800mm*1630mm
<p>Chiller is a kind of cooling water equipment that can provide constant temperature, constant flow and constant pressure. It is mainly used for cooling and process cooling of precision instruments and industrial equipment. Chiller is mainly used for cooling and process cooling of precision instruments and industrial equipment.</p>	
	Name: Online Crusher
	Blade material: DC53
	Feed port size: 800mm
	Crushing motor: 11KW
	Fan motor: 4KW
	Traction motor: 0.75KW
	Traction system: 1000W servo motor
	Dimension: 1200mm*1700mm*1800mm
<p>It is used for grinding the skeleton of sheet to flakes, then transporting by the blower through pipe to extrusion hopper, ensure continuously production or can be customized according customer different requirements.</p>	